



### **I Applications**

The Estampinox EFI pump is a stainless-steel centrifugal pump for decanting water and other fluids.

It is designed to cater for the needs of all the auxiliary services in the food-processing, chemical, pharmaceutical, and wine-making industries, among others.

### **I Operating principles**

Housed inside the casing, the impeller rotates in conjunction with the pump shaft.

With this arrangement, the impeller blades convey energy to the fluid in the form of kinetic energy and pressure energy.

This pump is not reversible by simple reversal of the direction of rotation. The direction of rotation is clockwise when the pump is viewed from the rear side of the motor.

### **I Design and features**

Casing manufactured with cold-formed plate.

BSP/GAS connections (standard)

Open impeller manufactured with stainless steel cold-formed plate or investment casting motor according to model.

Inside mechanical seal.

Simple parts and easy maintenance

Engine according to IEC B34 standards

### **I Materials**

Parts in contact with pumped media:

AISI 316L

Other parts:

AISI 304

Gaskets (standard)

VMQ (Silicone)

Mechanical seal (standard)

Cer/C/NBR

Surface Finishing

Electropolished



### **I Options**

AISI 304 motor shroud

Mechanical seal in C/St.St or TgC/TgC

Gaskets in EPDM, FPM (viton<sup>®</sup>) or PTFE.

Motors with additional protection.

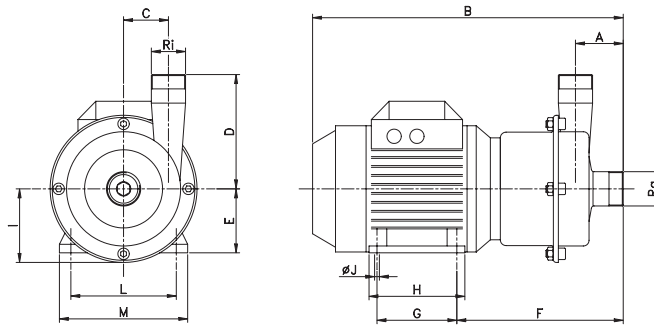
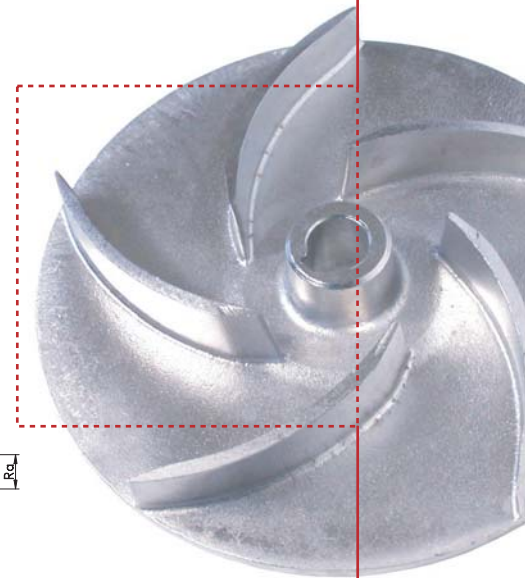
Trolley and/or switchboard

Connections: DIN, SMS, Clamp, Flanges ...

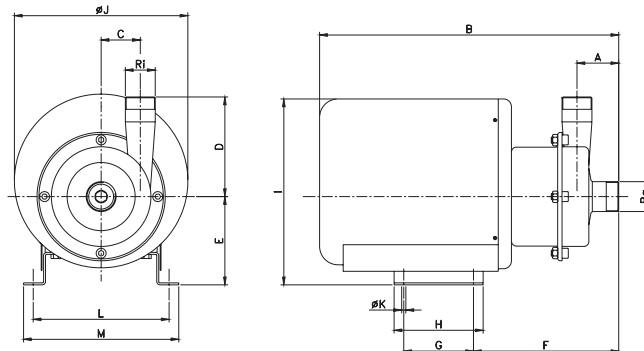


**I Technical specifications**

Max.flow 50 m<sup>3</sup>/h /220GPM  
 Max.head 52 mcl / 170ft  
 Max.suction pressure 2 bar / 29 PSI  
 Max.operating temp. 90 °C / 194°F  
 Max.speed 3500 min<sup>-1</sup>



| TYPE PUMP                          | Motor |      |                       | GAS/BSP               |     | A   | B   | C   | D   | E   | F   | G   | H   | I   | ØJ  | L   | M   |     |
|------------------------------------|-------|------|-----------------------|-----------------------|-----|-----|-----|-----|-----|-----|-----|-----|-----|-----|-----|-----|-----|-----|
|                                    | Size. | kW   | R.P.M                 | Ra                    | Ri  |     |     |     |     |     |     |     |     |     |     |     |     |     |
| EFI-2003                           | 71    | 0,37 | 2900min <sup>-1</sup> | 1"                    | ¾"  | 60  | 359 | 36  | 100 | 71  | 197 | 90  | 112 | 73  | 7   | 112 | 135 |     |
| EFI-2107                           | 80    | 0,75 |                       | 1½"                   | 1"  | 64  | 393 | 48  | 110 | 80  | 208 | 100 | 125 | 86  | 9   | 125 | 153 |     |
| EFI-2222<br>EFI-2222A              | 90L   | 2,2  |                       | 1½"                   | 1½" | 67  | 444 | 66  | 160 | 90  | 228 | 125 | 150 | 103 | 10  | 140 | 170 |     |
| EFI-2340<br>EFI-2340B              | 100   | 4    |                       | 2"                    | 2"  | 70  | 493 | 92  | 192 | 100 | 255 | 140 | 172 | 128 | 12  | 160 | 197 |     |
| EFI-2355<br>EFI-2355A              | 112   | 5,5  |                       |                       |     |     |     |     |     |     |     |     |     |     |     |     |     | 521 |
| EFI-4002                           | 71    | 0,25 |                       | 1450min <sup>-1</sup> | 1"  | ¾"  | 60  | 359 | 36  | 100 | 71  | 197 | 90  | 112 | 73  | 7   | 112 | 135 |
| EFI-4105                           | 80    | 0,55 |                       |                       | 1½" | 1"  | 64  | 393 | 48  | 110 | 80  | 208 | 100 | 125 | 86  | 9   | 125 | 153 |
| EFI-4211<br>EFI-4211A              | 90L   | 1,1  |                       |                       | 1½" | 1½" | 67  | 444 | 66  | 160 | 90  | 228 | 125 | 150 | 103 | 10  | 140 | 170 |
| EFI-4322<br>EFI-4322A<br>EFI-4322B | 100   | 2,2  |                       |                       | 2"  | 2"  | 70  | 493 | 92  | 192 | 100 | 255 | 140 | 172 | 128 | 12  | 160 | 197 |
| EFI-4330<br>EFI-4330A              |       | 3    |                       |                       |     |     |     |     |     |     |     |     |     |     |     |     |     |     |



| TYPE                  | Motor |      | GAS/BSP |     | A  | B   | C  | D   | E   | F   | G   | H   | I   | ØJ  | ØK | L   | M   |
|-----------------------|-------|------|---------|-----|----|-----|----|-----|-----|-----|-----|-----|-----|-----|----|-----|-----|
|                       | Tam.  | Kw   | Ra      | Ri  |    |     |    |     |     |     |     |     |     |     |    |     |     |
| EFI-2003              | 71    | 0,37 | 1"      | ¾"  | 60 | 395 | 36 | 100 | 106 | 197 | 90  | 110 | 235 | 220 | 7  | 168 | 188 |
| EFI-2107              | 80    | 0,75 | 1½"     | 1"  | 63 | 440 | 50 | 110 | 130 | 208 | 100 | 130 | 290 | 270 | 9  | 195 | 225 |
| EFI-2222<br>EFI-2222A | 90L   | 2,2  | 1½"     | 1½" | 64 | 455 | 66 | 160 | 140 | 228 | 125 | 155 | 300 | 270 | 10 | 210 | 240 |
| EFI-2340<br>EFI-2340B | 100   | 4    | 2"      | 2"  | 70 | 550 | 92 | 192 | 160 | 255 | 140 | 170 | 353 | 330 | 12 | 242 | 272 |
| EFI-2355<br>EFI-2355A | 112   | 5,5  |         |     |    |     |    |     |     |     |     |     |     |     |    |     |     |

